



Nestlé Lemonade									
FLAVORED FRUIT DRINK MIX									
NUTRITION INFORMATION									
Serving Size 5g (1 tsp) No. of servings per pack: 40									
		per 5g	per 10g	per 100g	per 100ml				
Energy	kcal	19	38	190	9				
Protein	g	0	0	0	0				
Fat	g	0	0	0	0				
Monounsaturated Fat	g	0	0	0	0				
Polysaturated Fat	g	0	0	0	0				
Saturated Fat	g	0	0	0	0				
Trans Fat	g	0	0	0	0				
Cholesterol	mg	0	0	0	0				
Sodium	mg	31	62	310	16				
Carbohydrates	g	4.7	9.4	47	2.3				
Total Sugars	g	3.4	6.8	34	1.7				
Sugary Fiber	g	0	0	0	0				
Vitamin C	mg	10	20	100	5				
*As reconstituted according to label directions 25% lower in sugar as compared to regular Asian drinks Keep Fresh & Hydrated									
Imported by: Egen Pengilang: Nestlé Products Sdn. Bhd. (19790100966), Level 22, 1 Powerhouse No. 1, Persiaran Bandar Utama, Bandar Utama, 47800 Petaling Jaya, Selangor Darul Ehsan, Malaysia									
Imported by: Kim Teck Cheong Grandtop Sdn. Bhd., Unit E&F2, 1st Floor, Block E, Sg 300, Mentari Komplek, Sg Mentari, Jalan Kota Batu, BU 1909, Negeri Sembilan Darussalam									
Imported by: Nestlé Singapore (Pte) Ltd., 15A Chang Business Park Central 1, #05-02/03, Egleston@ Chang Business Park, Singapore 486035									
EXPORTED FROM THE PHILIPPINES 12508059									



NUTRITION INFORMATION NESTLE Npro Lemonade Exp			
Serving Size	:	5g	
Serving Per Pack	:	40	
Average Composition		Per Serving 5g	Per 100ml*
Energy	Kcal	19	9
Protein	g	0	0
Fat	g	0	0
Saturated Fat	g	0	0
Carbohydrate	g	4.7	2.3
Total Sugars	g	3.4	1.7
Sodium	mg	31	16
Vitamin C	mg	10	5
*As reconstituted with water			
Preparation Method	:	5g + 200ml water = 200ml	

*As reconstituted according to label directions
25% lower in sugar as compared to regular Asian drinks

Ingredients

Sugar, Acidity regulators (Citric acid, Sodium citrate), Anticaking agent (Tricalcium phosphate), Flavourings (Contains **Soya**), Sweeteners (Aspartame*, Acesulfame potassium), Cloudifier (Maize maltodextrin, Coconut oil), Vitamin C, Natural colouring (Beta-carotenes)

Allergen Information

Phenylketonurics: contains Phenylalanine; UNSUITABLE FOR PHENYLKETONURICS

Contains Soya.



NUTRITION INFORMATION NESTLE PinkLycheeLemonade Exp			
Serving Size	:	5g	
Serving Per Pack	:	40	
Average Composition		Per Serving 5g	Per 100ml*
Energy	Kcal	19	9
Protein	g	0	0
Fat	g	0	0
Saturated Fat	g	0	0
Carbohydrate	g	4.6	2.3
Total Sugars	g	3.6	1.8
Sodium	mg	31	16
Vitamin C	mg	10	5
*As reconstituted with water			
Preparation Method	:	5g + 200ml water = 200ml	

*As reconstituted according to label directions
25% lower in sugar as compared to regular Asian drinks

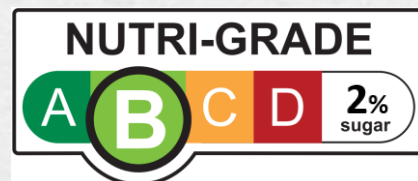
Ingredients

Sugar, Acidity regulators (Citric acid, Sodium citrate), Anticaking agent (Tricalcium phosphate), Sweeteners (Aspartame*, Acesulfame potassium), Natural colouring (Red beetroot), Cloudifier (Maize maltodextrin, Coconut oil), Artificial and Natural flavourings (Contains **Soya**), Vitamin C

Allergen Information

Phenylketonurics: contains Phenylalanine; UNSUITABLE FOR PHENYLKETONURICS

Contains Soya.



NUTRITION INFORMATION NESTLE NproCucumberLemonadeExp			
Serving Size	:	5g	
Serving Per Pack	:	40	
Average Composition		Per Serving 5g	Per 100ml*
Energy	Kcal	18	9
Protein	g	0	0
Fat	g	0	0
Saturated Fat	g	0	0
Carbohydrate	g	4.6	2.3
Total Sugars	g	3.6	1.8
Sodium	mg	55	27
Vitamin C	mg	10	5
*As reconstituted with water			
Preparation Method	:	5g + 200ml water = 200ml	

*As reconstituted according to label directions
25% lower in sugar as compared to regular Asian drinks

Ingredients

Sugar, Acidity regulators (Citric acid, Sodium citrate), Flavourings (Contains **Soya**), Anticaking agent (Tricalciumphosphate), Sweeteners (Aspartame*, Acesulfame potassium), Stabilizer (Cellulose gum), Vitamin C, Cloudifier (Maize maltodextrin, Coconut oil), Natural (Beta-carotenes) and Artificial (Brilliant blue) colourings

Allergen Information

Phenylketonurics: contains Phenylalanine; UNSUITABLE FOR PHENYLKETONURICS

Contains Soya.



NUTRITION INFORMATION NESTEA Npro House Blend Exp			
Serving Size	:	5g	
Serving Per Pack	:	40	
Average Composition		Per Serving 5g	Per 100ml*
Energy	Kcal	19	10
Protein	g	0	0
Fat	g	0	0
Saturated Fat	g	0	0
Carbohydrate	g	4.6	2.3
Total Sugars	g	3.6	1.8
Sodium	mg	5	3
Vitamin C	mg	10	5
*As reconstituted with water			
Preparation Method	:	5g + 200ml water = 200ml	

*As reconstituted according to label directions
25% lower in sugar as compared to regular Asian drinks

Ingredients

Sugar, Acidity regulators (Citric acid, Malic acid), Tea powder (8.5%) (*Camellia sinensis*), Calamansi powder, Sweeteners (Aspartame*, Acesulfame potassium), Stabilizer (Cellulose gum), Anticaking agent (Tricalcium phosphate), Vitamin C

Allergen Information

Phenylketonurics: contains Phenylalanine; UNSUITABLE FOR PHENYLKETONURICS



NUTRITION INFORMATION NESTEA Peach Tea			
Serving Size	:	15g	
Serving Per Pack	:	45	
Average Composition		Per Serving 15g	Per 100ml*
Energy	Kcal	59	20
Protein	g	0	0
Fat	g	0	0
Saturated Fat	g	0	0
Carbohydrate	g	14.7	5.0
Total Sugars	g	11.6	3.9
Lactose	g	0	0
Sodium	mg	2	1
*As reconstituted with water			
Preparation Method	:	15g + 200ml water + 1/3 ice (80ml) = 280ml	

*As reconstituted according to label directions
25% lower in sugar as compared to regular Asian drinks

Ingredients

Sugar, Maltodextrin, Black Tea, Citric Acid, Flavourings, Anti-caking Agent (E551), Xanthan Gum, Steviol Glycosides.

Allergen Information

May contain: Milk



NUTRITION INFORMATION NESTEA Green Tea			
Serving Size	:	13g	
Serving Per Pack	:	58	
Average Composition		Per Serving 13g	Per 100ml*
Energy	Kcal	51	19
Protein	g	0	0
Fat	g	0	0
Saturated Fat	g	0	0
Carbohydrate	g	12.7	4.8
Total Sugars	g	12.6	4.8
Lactose	g	0	0
*As reconstituted with water			
Preparation Method	:	13g + 200ml water + 1/3 ice (50ml) = 250ml	

*As reconstituted according to label directions
25% lower in sugar as compared to regular Asian drinks

Ingredients
Sugar, GreenTea Extract, Jasmine Flavor, Tea Extract, Anti Caking Silicon Dioxide.

Allergen Information
May contain: Milk

Ingredient
Sugar, Skimmed Milk (Cow’s Milk), Extract of Malt Barley & Starch, Cocoa, Palm Olein, Acidity Regulators (INS504i, INS339ii), Minerals (Calcium Phosphate, Iron Pyrophosphate), Vitamins (B3, B6, B2, D, B12), Emulsifier (Soya Lecithin), Stabiliser (INS407).



NUTRITION INFORMATION MILO 12x1L			
Serving Size	:	200ml (67ml of Concentrate + 133ml of water)	
Serving Per Pack	:	15	
Average Composition		Per Serving 67ml	Per 100ml*
Energy	Kcal	129	64.5
Protein	g	4.0	2.0
Fat	g	3.4	1.7
Saturated Fat	g	1.4	0.7
Trans Fat	g	0.1	0.05
Cholesterol	g	2.0	1.0
Carbohydrate	g	20.0	10.0
Total Sugars	g	16.0	8.0
Added Sugars	g	10.0	5.0
Dietary Fibre	g	1.0	0.5
Sodium	mg	74	37
Calcium	mg	139	69.5
Phosphorous	mg	107	53.5
Vitamin D	mcg	2.3	1.15
Vitamin B2	mg	0.3	0.15
Niacin	mg	2.7	1.35
Vitamin B6	mg	0.3	0.15
*As reconstituted with water			
Preparation Method	:	67ml MILO Concentrate + 133ml water = 200ml	

*As reconstituted according to label directions
25% lower in sugar as compared to regular malted beverages

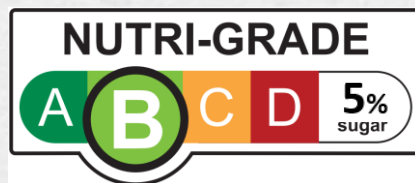
Ingredient

Sugar, Skimmed Milk (Cow’s Milk), Extract of Malt Barley & Starch, Cocoa, Palm Olein, Acidity Regulators (INS504i, INS339ii), Minerals (Calcium Phosphate, Iron Pyrophosphate), Vitamins (B3, B6, B2, D, B12), Emulsifier (Soya Lecithin), Stabiliser (INS407).



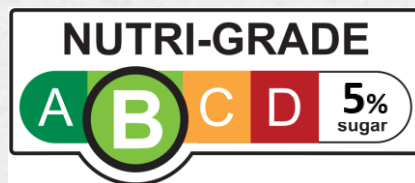
NUTRITION INFORMATION MILO BIB 2x4L			
Serving Size	:	200ml (67ml of Concentrate + 133ml of water)	
Serving Per Pack	:	60	
Average Composition		Per Serving 67ml	Per 100ml*
Energy	Kcal	129	64.5
Protein	g	4.0	2.0
Fat	g	3.4	1.7
Saturated Fat	g	1.4	0.7
Trans Fat	g	0.1	0.05
Cholesterol	g	2.0	1.0
Carbohydrate	g	20.0	10.0
Total Sugars	g	16.0	8.0
Added Sugars	g	10.0	5.0
Dietary Fibre	g	1.0	0.5
Sodium	mg	74	37
Calcium	mg	139	69.5
Phosphorous	mg	107	53.5
Vitamin D	mcg	2.3	1.15
Vitamin B2	mg	0.3	0.15
Niacin	mg	2.7	1.35
Vitamin B6	mg	0.3	0.15
*As reconstituted with water			
Preparation Method	:	67ml MILO Concentrate + 133ml water = 200ml	

25% lower in sugar as compared to regular malted beverages



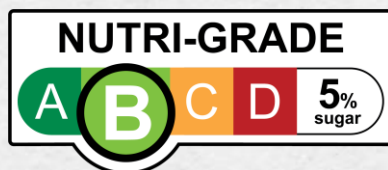
NUTRITION INFORMATION MILO BIB 2x5L			
Serving Size	:	200ml (67ml of Concentrate + 133ml of water)	
Serving Per Pack	:	75	
Average Composition		Per Serving 67ml	Per 100ml*
Energy	Kcal	129	64.5
Protein	g	4.0	2.0
Fat	g	3.4	1.7
Saturated Fat	g	1.4	0.7
Trans Fat	g	0.1	0.05
Cholesterol	g	2.0	1.0
Carbohydrate	g	20.0	10.0
Total Sugars	g	16.0	8.0
Added Sugars	g	10.0	5.0
Dietary Fibre	g	1.0	0.5
Sodium	mg	74	37
Calcium	mg	139	69.5
Phosphorous	mg	107	53.5
Vitamin D	mcg	2.3	1.15
Vitamin B2	mg	0.3	0.15
Niacin	mg	2.7	1.35
Vitamin B6	mg	0.3	0.15
*As reconstituted with water			
Preparation Method	:	67ml MILO Concentrate + 133ml water = 200ml	

*As reconstituted according to label directions
25% lower in sugar as compared to regular malted beverages



NUTRITION INFORMATION SJORA Lychee Berry (2 x 4L)			
Serving Size	:	200ml (25ml of Concentrate + 175ml of water)	
Serving Per Pack	:	160	
Average Composition		Per Serving 25ml	Per 100ml*
Energy	Kcal	48	24
Protein	g	0.6	0.3
Fat	g	0	0
Saturated Fat	g	0	0
Trans Fat	g	0	0
Cholesterol	mg	0.5	0.2
Carbohydrate	g	11.5	5.8
Total Sugars	g	10.8	5.4
Added Sugars	g	9.7	4.9
Dietary Fibre	g	0	0
Sodium	mg	10	5
*As reconstituted with water			
Preparation Method	:	25ml Concentrate + 175ml water = 200ml	

*As reconstituted according to label directions
25% lower in sugar as compared to regular Asian drinks



NUTRITION INFORMATION SJORA Mango Peach (2 x 4L)

Serving Size	:	199ml (32ml of Concentrate + 167ml of water)	
Serving Per Pack	:	125	
Average Composition		Per Serving 32ml	Per 100ml*
Energy	Kcal	68.5	23
Protein	g	0.5	0.17
Fat	g	0	0
Saturated Fat	g	0	0
Carbohydrate	g	16.6	5.6
Total Sugars	g	15.4	5.2
Sucrose	g	13.1	4.4
Lactose	g	0.7	0.2
Glucose	g	0.8	0.3
Maltose	g	0	0
Fructose	g	0.7	0.2
Dietary Fibre	g	0	0
Sodium	mg	10	3.3
*As reconstituted with water			
Preparation Method	:	32ml + 167ml water = 199ml	

*As reconstituted according to label directions