

NUTRITION INFORMATION NESTLÉ Npro Lemonade Exp			
Serving Size	:	5g	
Serving Per Pack	:	40	
Average Composition		Per Serving 5g	Per 100ml*
Energy	Kcal	19	9
Protein	g	0	0
Fat	g	0	0
Saturated Fat	g	0	0
Carbohydrate	g	4.7	2.3
Total Sugars	g	3.4	1.7
Sodium	mg	31	16
Vitamin C	mg	10	5
*As reconstituted with water			
Preparation Method	:	5g + 200ml water = 200ml	

*As reconstituted according to label directions
25% lower in sugar as compared to regular Asian drinks

Ingredients

Sugar, Acidity regulators (Citric acid, Sodium citrate), Anticaking agent (Tricalcium phosphate), Flavourings (Contains **Soya**), Sweeteners (Aspartame*, Acesulfame potassium), Cloudifier (Maize maltodextrin, Coconut oil), Vitamin C, Natural colouring (Beta-carotenes)

Allergen Information

Phenylketonurics: contains Phenylalanine; UNSUITABLE FOR PHENYLKETONURICS

Contains Soya.



Nestlé. Lemonade Pink Lychee									
FLAVORED FRUIT DRINK MIX									
NUTRITION INFORMATION									
Serving Size: 5g (1 tsp) No. of servings per pack: 40									
	Unit	per 100g	per 5g	per 10g	per 100ml	per 5g	per 10g	per 100ml	per 5g
Energy	kcal	19	0.19	0.38	0	0	0	0	0
Protein	g	0	0	0	0	0	0	0	0
Fat	g	0	0	0	0	0	0	0	0
Monounsaturated Fat	g	0	0	0	0	0	0	0	0
Polysaturated Fat	g	0	0	0	0	0	0	0	0
Saturated Fat	g	0	0	0	0	0	0	0	0
Trans Fat	g	0	0	0	0	0	0	0	0
Cholesterol	mg	0	0	0	0	0	0	0	0
Sodium	mg	32	0.32	0.64	16	0.16	0.32	0.64	0.16
Carbohydrates	g	4.6	0.046	0.092	2.3	0.023	0.046	0.092	0.023
Total Sugars	g	3.6	0.036	0.072	1.8	0.018	0.036	0.072	0.018
Dietary Fiber	g	0	0	0	0	0	0	0	0
Vitamin C	mg	10	0.1	0.2	5	0.05	0.1	0.2	0.05

INGREDIENTS:
Sugar, Acidity regulators (Citric acid, Sodium citrate), Anticaking agent (Tricalcium phosphate), Sweeteners (Aspartame*, Acesulfame potassium), Natural colouring (Red beetroot), Cloudifier (Maize maltodextrin, Coconut oil), Artificial and Natural Flavourings (Contains Soya), Vitamin C.

***Phenylketonurics:** contains Phenylalanine
Contains permitted Acidity regulators, Anticaking agent, Colouring, and Flavourings.
All additives are of plant or synthetic origin.
***UNSUITABLE FOR PHENYLKETONURICS**

Allergen Information: Contains Soya

Colors may change over time

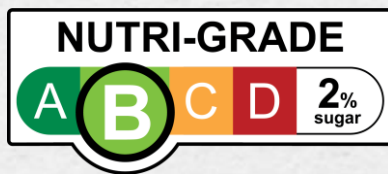
Net Weight 200g

Manufactured for:
NESTLÉ PHILIPPINES, INC.
Km 46 Ring Road, Calabarzon, Laguna, Philippines.
Under license of Société des Produits Nestlé S.A., Vevey, Switzerland.
Trademark Owners

PRODUCT OF THE PHILIPPINES

Store in a cool dry place.
This pack is for institutional use.

4 800561420518
USE BY DATE AND LOT ID: See Seal Area
PH44150781F3SP/0011 100009143



NUTRITION INFORMATION NESTLÉ PinkLycheeLemonade Exp			
Serving Size	:	5g	
Serving Per Pack	:	40	
Average Composition		Per Serving 5g	Per 100ml*
Energy	Kcal	19	9
Protein	g	0	0
Fat	g	0	0
Saturated Fat	g	0	0
Carbohydrate	g	4.6	2.3
Total Sugars	g	3.6	1.8
Sodium	mg	32	16
Vitamin C	mg	10	5
*As reconstituted with water			
Preparation Method	:	5g + 200ml water = 200ml	

*As reconstituted according to label directions
25% lower in sugar as compared to regular Asian drinks

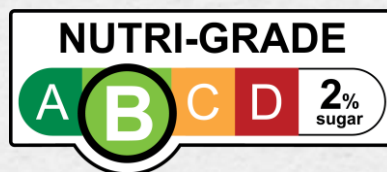
Ingredients

Sugar, Acidity regulators (Citric acid, Sodium citrate), Anticaking agent (Tricalcium phosphate), Sweeteners (Aspartame*, Acesulfame potassium), Natural colouring (Red beetroot), Cloudifier (Maize maltodextrin, Coconut oil), Artificial and Natural flavourings (Contains **Soya**), Vitamin C

Allergen Information

Phenylketonurics: contains Phenylalanine; UNSUITABLE FOR PHENYLKETONURICS

Contains Soya.



NUTRITION INFORMATION NESTLE NproCucumberLemonadeExp

Serving Size	:	5g	
Serving Per Pack	:	40	
Average Composition		Per Serving 5g	Per 100ml*
Energy	Kcal	18	9
Protein	g	0	0
Fat	g	0	0
Saturated Fat	g	0	0
Carbohydrate	g	4.6	2.3
Total Sugars	g	3.6	1.8
Sodium	mg	55	27
Vitamin C	mg	10	5
*As reconstituted with water			
Preparation Method	:	5g + 200ml water = 200ml	

*As reconstituted according to label directions
25% lower in sugar as compared to regular Asian drinks

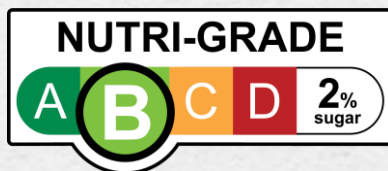
Ingredients

Sugar, Acidity regulators (Citric acid, Sodium citrate), Flavourings (Contains **Soya**), Anticaking agent (Tricalciumphosphate), Sweeteners (Aspartame*, Acesulfame potassium), Stabilizer (Cellulose gum), Vitamin C, Cloudifier (Maize maltodextrin, Coconut oil), Natural (Beta-carotenes) and Artificial (Brilliant blue) colourings

Allergen Information

Phenylketonurics: contains Phenylalanine; UNSUITABLE FOR PHENYLKETONURICS

Contains Soya.



NUTRITION INFORMATION NESTEA Npro House Blend Exp			
Serving Size	:	5g	
Serving Per Pack	:	40	
Average Composition		Per Serving 5g	Per 100ml*
Energy	Kcal	19	10
Protein	g	0	0
Fat	g	0	0
Saturated Fat	g	0	0
Carbohydrate	g	4.6	2.3
Total Sugars	g	3.6	1.8
Sodium	mg	5	3
Vitamin C	mg	10	5
*As reconstituted with water			
Preparation Method	:	5g + 200ml water = 200ml	

*As reconstituted according to label directions
25% lower in sugar as compared to regular Asian drinks

Ingredients

Sugar, Acidity regulators (Citric acid, Malic acid), Tea powder (8.5%) (*Camellia sinensis*), Calamansi powder, Sweeteners (Aspartame*, Acesulfame potassium), Stabilizer (Cellulose gum), Anticaking agent (Tricalcium phosphate), Vitamin C

Allergen Information

Phenylketonurics: contains Phenylalanine; UNSUITABLE FOR PHENYLKETONURICS



NUTRITION INFORMATION NESTEA Peach Tea			
Serving Size	:	15g	
Serving Per Pack	:	45	
Average Composition		Per Serving 15g	Per 100ml*
Energy	Kcal	57	27
Protein	g	0	0
Fat	g	0	0
Saturated Fat	g	0	0
Carbohydrate	g	14.1	6.5
Total Sugars	g	5.0	2.3
Lactose	g	0	0
Sodium	mg	3	1
*As reconstituted with water			
Preparation Method	:	680g + 9L water	

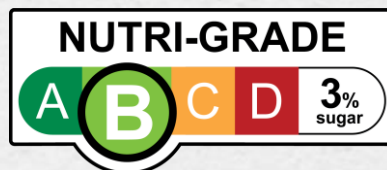
*As reconstituted according to label directions
25% lower in sugar as compared to regular Asian drinks

Ingredients

Sugar, Maltodextrin, Black Tea, Citric Acid, Flavourings, Anti-caking Agent (E551), Xanthan Gum, Steviol Glycosides.

Allergen Information

May contain: Milk



Ingredient

Sugar, Skimmed **Milk** (Cow's **Milk**), Extract of Malt Barley & Starch, Cocoa, Palm Olein, Acidity Regulators (INS504i, INS339ii), Minerals (Calcium Phosphate, Iron Pyrophosphate), Vitamins (B3, B6, B2, D, B12), Emulsifier (**Soya** Lecithin), Stabiliser (INS407).



NUTRITION INFORMATION			
MILO 12x1L			
Serving Size	:	200ml	
Serving Per Pack	:	15	
Average Composition		Per 100ml**	Per serving concentrate
Energy	Kcal	64.5	129
Protein	g	2.0	4.0
Total Fat	g	1.7	3.4
Saturated Fat	g	0.7	1.4
Trans Fat	g	0.05	0.1
Cholesterol	mg	1.0	2.0
Carbohydrates	g	10.0	20.0
Total Sugars	g	8.0	16.0
Added Sugars	g	5.0	10.0
Lactose	g	3.0	6.0
Dietary Fibre	g	0.5	1.0
Sodium	mg	37	74
Calcium	mg	69.5	139
Phosphorous	mg	53.5	107
Vitamin D	mcg	1.15	2.3
Vitamin B2	mg	0.15	0.3
Niacin	mg	1.35	2.7
Vitamin B6	mg	0.15	0.3
*As reconstituted with water			
Preparation Method	:	67ml MILO Concentrate + 133ml water = 200ml	

*As reconstituted according to label directions
25% lower in sugar as compared to regular malted beverages

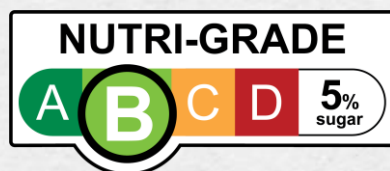
Ingredient

Sugar, Skimmed Milk (Cow’s Milk), Extract of Malt Barley & Starch, Cocoa, Palm Olein, Acidity Regulators (INS504i, INS339ii), Minerals (Calcium Phosphate, Iron Pyrophosphate), Vitamins (B3, B6, B2, D, B12), Emulsifier (Soya Lecithin), Stabiliser (INS407).



NUTRITION INFORMATION MILO BIB 2x5L			
Serving Size	:	200ml	
Serving Per Pack	:	149	
Average Composition		Per 100ml**	Per serving concentrate
Energy	Kcal*	64.5	129
Protein	g	2.0	4.0
Total Fat	g	1.7	3.4
Saturated Fat	g	0.7	1.4
Trans Fat	g	0.05	0.1
Cholesterol	mg	1.0	2.0
Carbohydrate	G	10.0	20.0
Total Sugars	g	8.0	16.0
Added Sugars	g	5.0	10.0
Lactose	g	3.0	6.0
Dietary Fibre	g	0.5	1.0
Sodium	mg	37	74
Calcium	mg	69.5	139
Phosphorous	mg	53.5	107
Vitamin D	mcg	1.15	2.3
Vitamin B2	mg	0.15	0.3
Niacin	mg	1.35	2.7
Vitamin B6	mg	0.15	0.3
*As reconstituted with water			
Preparation Method	:	67ml MILO Concentrate + 133ml water = 200ml	

*As reconstituted according to label directions
25% lower in sugar as compared to regular malted beverages



NUTRITION INFORMATION **SJORA Lychee Berry (2 x 4L)**

Serving Size	:	200ml	
Serving Per Pack	:	320	
Average Composition		Per Serving 25ml	Per 100ml*
Energy	Kcal	48	24
Protein	g	0.6	0.3
Total Fat	g	0.0	0.0
Saturated Fat	g	0.0	0.0
Trans Fat	g	0.0	0.0
Cholesterol	mg	0.5	0.2
Carbohydrate	g	11.5	5.8
Total Sugars	g	10.8	5.4
Added Sugars	g	9.7	4.9
Dietary Fibre	g	0.0	0.0
Sodium	mg	10	5
*As reconstituted with water			
Preparation Method	:	25ml Concentrate + 175ml water = 200ml	

*As reconstituted according to label directions
25% lower in sugar as compared to regular Asian drinks



NUTRITION INFORMATION

SJORA Mango Peach (2 x 4L)

Serving Size	:	200ml	
Serving Per Pack	:	242	
Average Composition		Per 100ml*	Per Serving
Energy	Kcal	35	70
Protein	g	0.25	0.5
Total Fat	g	0.0	0.0
Saturated Fat	g	0.0	0.0
Trans Fat	g	0.0	0.0
Cholesterol	mg	0.15	0.3
Carbohydrate	G	8.6	17.2
Total Sugars	g	7.9	15.8
Sucrose	g	6.75	13.5
Lactose	g	0.4	0.8
Glucose	g	0.4	0.8
Maltose	g	0.4	0.8
Fructose	g	0.4	0.8
Dietary Fibre	g	0.0	0.0
Sodium	mg	5	10
*As reconstituted with water			
Preparation Method	:	33ml + 167ml water	

*As reconstituted according to label directions